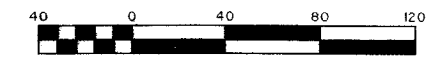


# CASTELLINA

LYING IN SECTION 13, TOWNSHIP 44 SOUTH, RANGE 41 EAST, VILLAGE OF WELLINGTON, PALM BEACH COUNTY, FLORIDA. BEING A REPLAT OF A PORTION OF LANIER PROPERTY AS RECORDED IN PLAT BOOK 108, PAGES 75 THROUGH 91, PUBLIC RECORDS OF PALM BEACH COUNTY, FLORIDA.

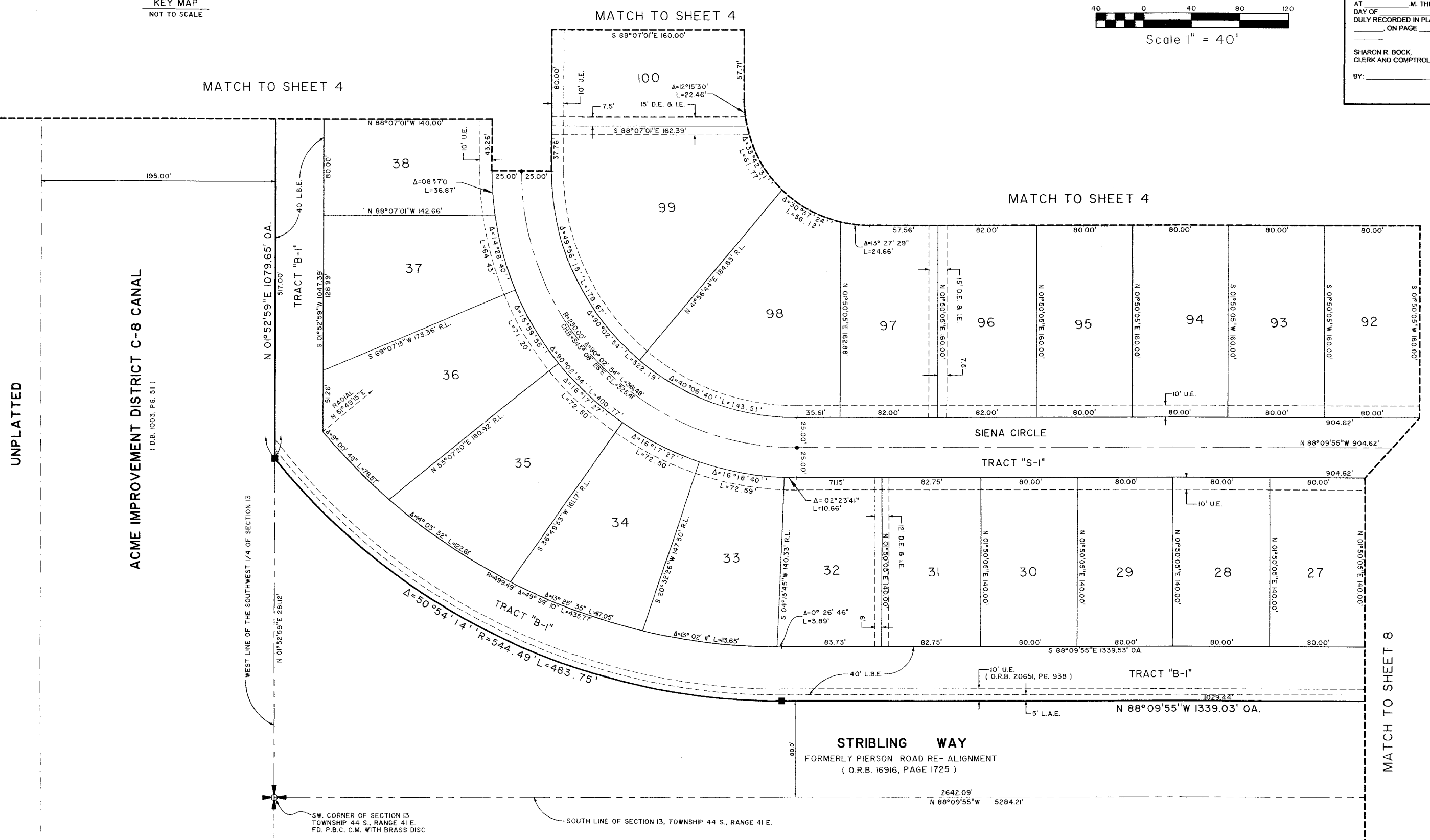
SHEET 3 OF 17

FEBRUARY, 2012



Scale 1" = 40'

COUNTY OF PALM BEACH }  
STATE OF FLORIDA } SS  
THIS PLAT WAS FILED FOR RECORD AT \_\_\_\_\_ M. THIS DAY OF \_\_\_\_\_, 2012, AND DULY RECORDED IN PLAT BOOK NO. \_\_\_\_\_, ON PAGE \_\_\_\_\_ THRU \_\_\_\_\_  
SHARON R. BOCK, CLERK AND COMPTROLLER  
BY: \_\_\_\_\_, D.C.



UNPLATTED

ACME IMPROVEMENT DISTRICT C-8 CANAL  
(D.B. 1003, PG. 511)

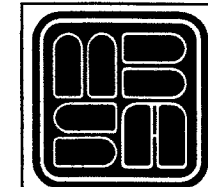
WEST LINE OF THE SOUTHWEST 1/4 OF SECTION 13

SW CORNER OF SECTION 13, TOWNSHIP 44 S., RANGE 41 E. FD. P.B.C. C.M. WITH BRASS DISC

SOUTH LINE OF SECTION 13, TOWNSHIP 44 S., RANGE 41 E.

OAKMONT ESTATES P.U.D.  
(PLAT BOOK 106, PAGES 2 - 9)

SHEET 3 OF 17



**MICHAEL B. SCHORAH & ASSOCIATES, INC.**  
1850 FOREST HILL BLVD., SUITE 206  
WEST PALM BEACH, FLORIDA 33406  
EB# 2438 TEL: (561) 968-0080 FAX: (561) 642-9728 LB# 2438

**CASTELLINA**